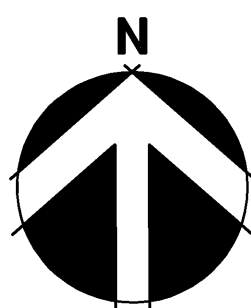
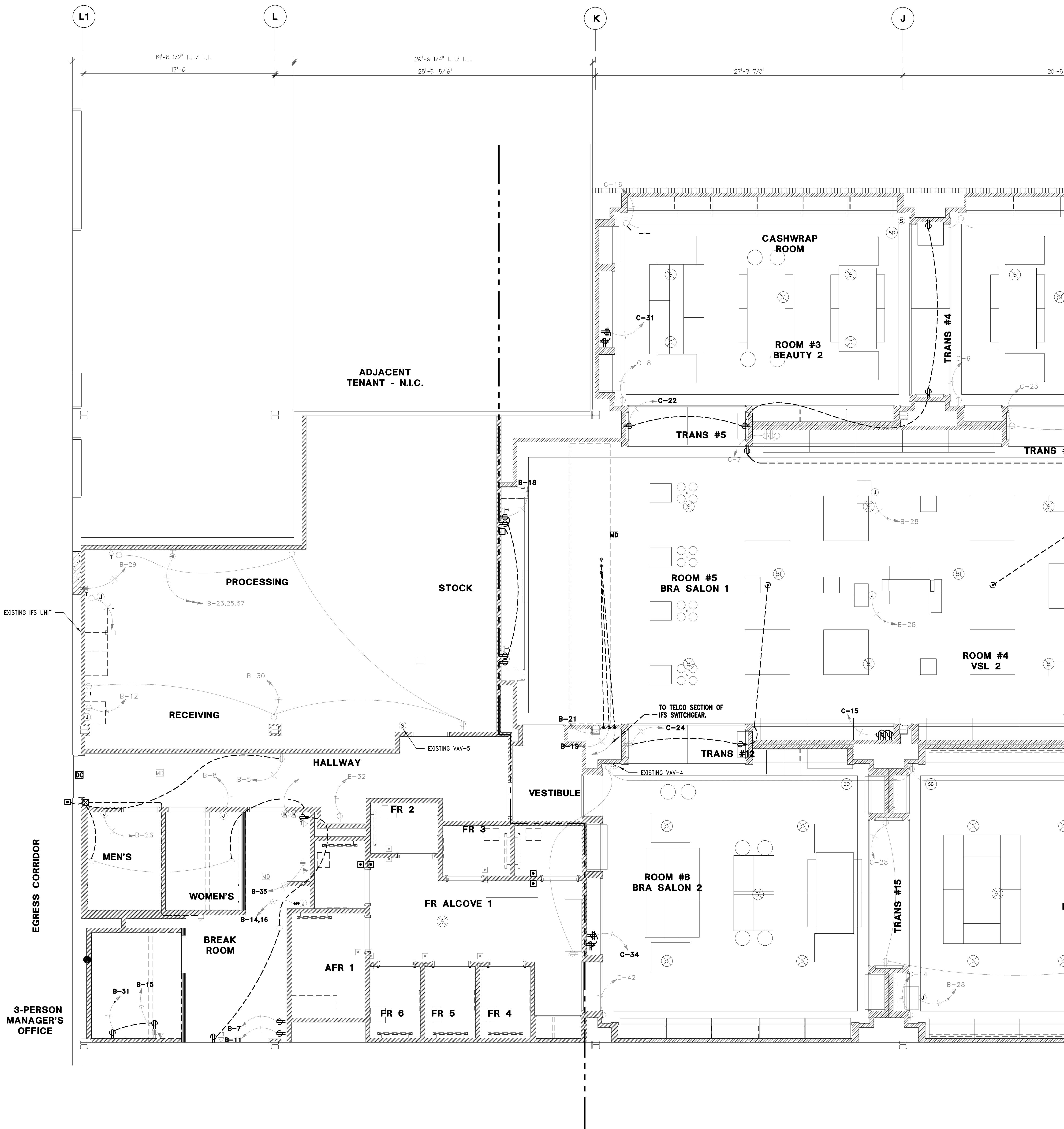


"VERIFY ALL FIELD CONDITIONS PRIOR TO BID"



1/4" = 1'-0"

A



EXTEND 1/2" TELEPHONE CONDUIT FROM SERVICE ENTRANCE AT DEMISING WALL TO TELEPHONE/DATA SECTION OF
IFB ENCLOSURE.

FURNISH AND INSTALL 3/4" CONDUIT WITH PULLWIRE FROM HVAC SECTION OF IFB ENCLOSURE TO ABOVE
CEILING. COORDINATE EXACT REQUIREMENT WITH MECHANICAL CONTRACTOR.

IFB ENCLOSURE. CONDUITS STUBBED INTO IFB ENCLOSURE SHALL BE INSTALLED IN A CLEAN AND NEAT MANNER.
ANCHOR IFB ENCLOSURE ACCORDING TO MANUFACTURER'S SPECIFICATIONS AND LOCAL CODES IN SEISMIC AREAS.
REFER TO SPECIFICATIONS AND Riser DIAGRAM FOR MORE INFORMATION. MAINTAIN MINIMUM WORKING CLEARANCE
IN THE DIRECTION OF ACCESS TO LIVE PARTS OF ELECTRICAL EQUIPMENT PER NEC TABLE 110.26(A).

TELEPHONE OUTLET IN WALL. INSTALL EMPTY 3/4" CONDUIT WITH PULLWIRE BACK TO TELCO SECTION OF IFB
ENCLOSURE. TELEPHONE WIRE AND #114C JACK FOR TWO LINE TELEPHONE BY OTHERS. MOUNT AT 48" AFF.
EXCEPT AS NOTED ON PLANS.

INSTALL DELIVERY BUZZER SYSTEM AS SHOWN ON DRAWINGS. L&D&C SHALL FURNISH COMPLETE EDWARDS
DELIVERY BUZZER SYSTEM COMPLETE WITH TRANSFORMER, BUZZERS, LOUVERED COVERPLATES, AND PUSHBUTTON
(WEATHERPROOF FOR OUTSIDE LOCATIONS). ELECTRICAL CONTRACTOR SHALL FURNISH AND INSTALL NECESSARY
JUNCTION BOXES, CONDUIT, AND WIRE TO COMPLETELY INSTALL DELIVERY BUZZER SYSTEM. JUNCTION BOXES
SHALL BE MOUNTED VERTICALLY.

PROVIDE DEDICATED ISOLATED GROUND DUPLEX RECEPTACLE AND DATA BOX AT 48" AFF FOR ALL SYSTEM.

20 AMP MICROWAVE RECEPTACLE @ 42" AFF WHEN COUNTER IS PRESENT, 18" FOR ALL OTHER CASES. IF PLAN
LOCATION IS NOT ACCEPTABLE, IMMEDIATELY CONTACT L&D&C PROJECT MANAGER FOR DIRECTION.

20 AMP RECEPTACLE @ 18" AFF FOR REFRIGERATOR OR VENDING MACHINE. IF PLAN LOCATION IS NOT
ACCEPTABLE, IMMEDIATELY CONTACT L&D&C PROJECT MANAGER FOR DIRECTION.

JUNCTION BOX FOR WATER HEATER ELECTRICAL CONNECTION. FURNISH AND INSTALL CODE REQUIRED DISCONNECT
SWITCH. COORDINATE EXACT LOCATION AND RELATED REQUIREMENTS WITH PLUMBING CONTRACTOR PRIOR TO
WORK COMMENCEMENT.

ELECTRICAL WHIP TYPE CONNECTION FOR HAND DRYER TO BE MOUNTED AT 21'-5/8" AFF AND 3'-3/8" IN FROM
EDGE OF UNIT. COORDINATE EXACT LOCATION MANUFACTURER INSTRUCTIONS PRIOR TO WORK COMMENCEMENT.

GFI DUPLEX RECEPTACLE AND COVERPLATE SHALL MATCH WALL COLOR. MOUNT AT 42" AFF.

JUNCTION BOX AND 1/2" CONDUIT FOR ELECTRONIC ACCESS LOCK. VERIFY CONDUIT SIZE AND PATH WITH
SECURITY CONTRACTOR.

KEYPAD FOR PAGING SYSTEM MOUNTED AT 48" AFF, ON WALL AND CONNECTED TO MODEM PANEL. REFER TO
RESPONSIBILITY SCHEDULE FOR INSTALLATION.

SAW CUT/CORE DRILL AND PATCH FLOOR SLAB AS REQUIRED FOR UNDERSLAB CONDUIT.

JUNCTION BOX CENTERED IN THE TRANSITION TO HARD WIRE BEAUTY TRANSITION FOCAL MOUNT BEAUTY
TRANSITION FOCAL SHALLOW (HFS) AT 9" AFF. MOUNT BEAUTY TRANSITION FOCAL FLAT (HFF) AT 15" AFF.
COORDINATE WITH ARCHITECTURAL DRAWINGS.

AIR DEVICE OR ACCESS PANEL BY GENERAL CONTRACTOR TO BE USED AS ACCESS TO EQUIPMENT LOCATED
ABOVE CEILING AND/OR FOR TRANSMISSION OF ALARM SOUND. CONTRACTOR SHALL BE RESPONSIBLE TO ENSURE
THAT A MINIMUM UNOBSTRUCTED FREE AREA OF 3" VERTICALLY AND 3" HORIZONTALLY IN ALL DIRECTIONS
AROUND EQUIPMENT IS MAINTAINED TO ALLOW FOR INSTALLATION AND MAINTENANCE OF EQUIPMENT. IF THIS FREE
AREA CANNOT BE OBTAINED, IMMEDIATELY CONTACT L&D&C'S PROJECT MANAGER FOR DIRECTION.

JUNCTION BOX AND CODE REQUIRED DISCONNECT SWITCH FOR MOTORIZED ROLL-UP GRILLE ELECTRICAL
CONNECTION. COORDINATE EXACT LOCATION AND RELATED REQUIREMENTS WITH L&D&C PROJECT MANAGER PRIOR TO
WORK COMMENCEMENT.

ELECTRICAL CONTRACTOR SHALL COORDINATE EXACT LOCATIONS OF BARREL KEY SWITCHES BEFORE WORK
COMMENCEMENT. ELECTRICAL CONTRACTOR SHALL CONNECT KEY SWITCH TO CONTROL BOARD AND DOOR LOCK
INTERLOCK.

ENCLOSURE WITH SENSORMATIC POWER PACK AND 24 HOUR DEDICATED DUPLEX RECEPTACLE MOUNTED ON
VERTICAL FACE OF SOFFIT ABOVE CEILING OR BELOW PLATFORM. ALARM SHALL BE POSITIONED SO IT CAN NOT
BE SEEN THROUGH RETURN GRILLE. COORDINATE SENSORMATIC FREQUENCY WITH ADJACENT TENANT SENSORMATIC
SYSTEMS.

DUPLEX RECEPTABLES FOR EACH ILLUMINATED LETTER OF PINK SIGN, PROVIDED BY OWNER, INSTALLED BY
ELECTRICAL CONTRACTOR. SEE ARCHITECTURAL DRAWINGS FOR EXACT LOCATIONS.

DUPLEX RECEPTACLE MOUNTED IN LIGHT COVE. BOTH STRANDS OF LEDS SHALL PLUG INTO RECEPTACLE. VERIFY
EXACT LOCATIONS WITH L&D&C PROJECT MANAGER PRIOR TO WORK COMMENCEMENT.

RECEPTACLE FOR STOREFRONT LED LIGHTING TO BE MOUNTED AT TOP OF WALL, 3" BELOW STRUCTURAL ANGLE
(REFER TO ARCHITECTURAL SECTIONS). RECEPTACLE SHALL BE POWERED FROM STOREFRONT DIMMING SYSTEM
POWER MODULE AND LABELED ACCORDING TO DIMMING ZONE. ZONE 1 (GENERAL STOREFRONT LED). REFER TO
STOREFRONT DIMMING SYSTEM RISER DIAGRAM AND SCHEDULE ON SHEET E05.01 FOR MORE INFORMATION.

JUNCTION BOX FOR LUTRON GRAFIK EYE DIMMER/MODULE.

VIDEO WALL. SEE ARCHITECTURAL DRAWINGS FOR EXACT LOCATIONS.

MOUNT RECEPTACLE VERTICALLY AT 15" AFF AND CENTERED IN WALL. SEE ARCHITECTURAL DRAWINGS FOR
LOCATION. RECEPTACLE MAY BE SHOWN AWAY FROM WALL FOR CLARITY.

REFER TO ELECTRICAL EQUIPMENT DATA ON SHEET E05.01 FOR CONDUIT AND WIRE SIZE.

4"x4" JUNCTION BOX MOUNTED AT 60" AFF WITH 1-1/4" CONDUIT (WITH BUSHINGS) TO CEILING FOR BURGLAR
ALARM. VERIFY EXACT LOCATION WITH L&D&C PROJECT MANAGER PRIOR TO WORK COMMENCEMENT.

INSTALL WALL MOUNTED MOTION DETECTOR AT REAR EXIT AND NEXT TO BURGLAR ALARM AT 7' AFF. VERIFY
EXACT LOCATIONS WITH L&D&C PROJECT MANAGER PRIOR TO WORK COMMENCEMENT.

KEYPAD FOR SECURITY SYSTEM MOUNTED AT 54" AFF, ON WALL, ON HANDLE SIDE OF NON-SALES DOOR
LEADING TO SALES AREA. AND 3/4" CONDUIT FROM JUNCTION BOX TO ABOVE CEILING.

INSTALL CEILING MOUNTED MOTION DETECTOR IN EACH STOREFRONT ROOM WITH AN ENTRANCE AND IN FRONT OF
EVERY CASHWRAP. VERIFY EXACT COLOR AND LOCATIONS WITH L&D&C PROJECT MANAGER PRIOR TO WORK
COMMENCEMENT.

DOOR CONTACT. GENERAL CONTRACTOR SHALL FURNISH AND INSTALL JUNCTION BOX AND 3/4" CONDUIT FROM
ABOVE CEILING TO 6" FROM DOOR, ALIGNED WITH TOP OF DOOR FOR SWING DOORS.

INSTALL CURTAIN WALL MOUNTED MOTION DETECTOR AT EACH ENTRY/ROLLING GRILLE. VERIFY EXACT LOCATIONS
WITH L&D&C PROJECT MANAGER PRIOR TO WORK COMMENCEMENT.

FIRE ALARM CONTROL PANEL WITH BATTERY BACK-UP AND MINIMUM OF 6 ZONES FURNISHED AND INSTALLED BY
FIRE ALARM CONTRACTOR. FIRE ALARM CONTROL PANEL SHALL BE TIED IN WITH EXISTING WALL CENTRAL FIRE
ALARM SYSTEM. CONTRACTOR SHALL COORDINATE FINAL SEQUENCES OF OPERATION WITH LANDLORD ENGINEER.

FIRE ALARM DEVICE FURNISHED AND INSTALLED BY FIRE ALARM CONTRACTOR. WIRED BY ELECTRICAL CONTRACTOR.
REFER TO SPECIFICATIONS FOR MOUNTING HEIGHTS.

HOME RUN TO IP CABINET LOCATED IN NON-SALES AREA.

HOME RUN TO DVR LOCATED IN MANAGER'S OFFICE.

KEYPAD FOR IP CAMERA SYSTEM MOUNTED WITH TOP AT 48" AFF AT LATCH SIDE OF BACK EXIT DOOR, AND
WITH 1/2" CONDUIT UP WALL TO JUNCTION BOX ABOVE CEILING.

INSTALL BUTTON FOR IP CAMERA SYSTEM ON WALL ADJACENT TO ALL SYSTEM AT 48" A.F.F. COORDINATE
EXACT LOCATION WITH L&D&C'S PROJECT MANAGER.

ROUTE 1/2" CONDUIT BACK TO IP CABINET.

PROVIDE DUPLEX CEILING RECEPTACLE FOR LUMISHEET. CENTER ON WINDOW, 6" BACK FROM SOFFIT LINE, WITH
LONG EDGE PARALLEL TO STOREFRONT. PROVIDE DEDICATED LIGHTING CIRCUIT CONTROLLED BY STOREFRONT
LIGHTING ZONE.

PROVIDE SURFACE MOUNTED JUNCTION BOX WITH TOGGLE SWITCH DISCONNECT AT ACCESSIBLE VOID SIDE OF
WALL FOR PORTAL SIGN BOX. REFER TO ARCHITECTURAL SECTION FOR MOUNTING HEIGHT.

PROVIDE JUNCTION BOX WITH TOGGLE SWITCH DISCONNECT FOR SIGN POWER. REFER TO ARCHITECTURAL DETAILS
FOR EXACT LOCATION.

PROVIDE JUNCTION BOX WITH TOGGLE SWITCH DISCONNECT FOR PINK OUTFITTING CENTER LIGHTS. REFER TO
ARCHITECTURAL DETAILS FOR EXACT LOCATION.

PROVIDE CEILING RECEPTACLE FOR CABINET LIGHTING. REFER TO ARCHITECTURAL DETAILS FOR EXACT LOCATION.

GFI DUPLEX RECEPTACLE AND COVERPLATE SHALL BE BLACK. MOUNT HORIZONTALLY AT 40" AFF. COORDINATE WITH
ARCHITECTURAL ELEVATIONS AND DETAILS FOR EXACT PLACEMENT.

PROVIDE JUNCTION BOX AND FINAL CONNECTION FOR RECESSED HAND DRYER. MOUNT JUNCTION BOX AT 46"
A.F.F. CONCEALED WITHIN THE RIGHT HAND SIDE OF THE WALL OPENING.

PROVIDE DUPLEX RECEPTACLE FOR UNDER CABINET LIGHTING. REFER TO DETAIL C/E04.02 FOR MOUNTING HEIGHT
AND CIRCUITING INFORMATION.

USB CHARGER RECEPTACLE AND COVERPLATE SHALL BE WHITE. PROVIDE DEEP BACK BOX TO FIT RECEPTACLE PER
MANUFACTURER REQUIREMENTS. FOR RECEPTABLES MOUNTED NEAR BREAK ROOM SINK, POWER RECEPTACLE ON
THE LOAD SIDE OF ADJACENT GFCI PROTECTED RECEPTACLE.

MONITORING SENSOR MOUNTED AT 48" AFF. SENSOR TO BE ROUTED BACK TO MONITOR CIRCUIT BOARD. PROVIDE
JUNCTION BOX NEXT TO IPS PANEL FOR MONITOR CIRCUIT BOARD. PROVIDE AND INSTALL 24 VOLT 150VA
TRANSFORMER COMPATIBLE WITH TRANE TRACER MP503 WITH CODE REQUIRED DISCONNECT SWITCH.

RECEPTACLE SHALL BE MOUNTED AT 28" AFF, CENTERED BEHIND VIGNETTE FIXTURE. GC SHALL BUNDLE AND BIND
LAMP CORD TIGHT.

----- DEMO CKT

----- EXISTING CKT

M-Engineering
750 Brookside Blvd.
Westerville, Ohio 43081
phone: 614.839.4639
fax: 614.839.2222
www.mengineering.us.com

Limited brands

LIMITED STORE PLANNING, INC.
d/b/a STORE DESIGN & CONSTRUCTION
Three Limited Parkway Columbus, Ohio 43230
Telephone: 614.415.7000 Fax: 614.415.7349

PROJECT INFORMATION: 010500133

VICTORIA'S SECRET
QUAIL SPRINGS MALL
SPACE NO. 119
2501 WEST MEMORIAL RD.
OKLAHOMA CITY, OK 73134

REVISIONS:

REQUIRED BY:	DATE:

ELITE CONSTRUCTION GROUP
LAKE JACKSON, TX
PHONE: 979.288.0715
NOTE: THESE PRINTS HAVE BEEN
REDUCED BY 50 PERCENT SCALE.
THEY WILL BE 50 PERCENT OF WHAT IS
NOTED ON PLANS.

DATE ISSUED: 05.30.2014
DESIGNED BY: ASB
DRAWN BY: ASB
CHECKED BY: DFG

**ELECTRICAL
POWER
DEMO PLAN**

DRAWING NUMBER:
E06.1